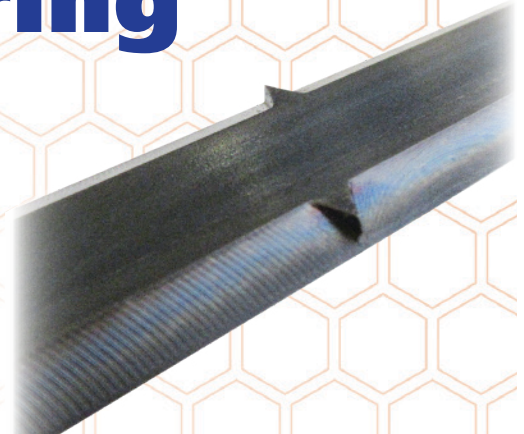


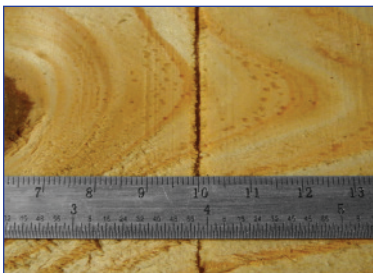
# Integrated Scoring Knives (ISK)

With the majority of all stranders across North America using Kadant Carmanah's *Disposable Knife System (DKS)*, we are proud to introduce our latest innovation to deliver consistent strand quality at the lowest cost of ownership with our new *Integrated Scoring Knives (ISK)*.



## Proven to Improve Board Properties

**ISK**  
(INTEGRATED SCORING KNIVES)



**DKS**  
(DISPOSABLE KNIFE SYSTEM)



Available on all Kadant Carmanah SmartDISC and SmartRING Stranders, our *Integrated Scoring Knives (ISK)* include the knife, counterknife, and scoring tip – all in one single component.

Engineered as the next evolution for mills that are already using our *Disposable Knife System (DKS)*, our *ISK* system utilizes the same facegear, while eliminating the need to purchase, stock, install, and change the scoring tips.

Not only does this simplify and speed up the knife change process, it also ensures consistent strand quality with its precise scoring tip projections, reduced tip widths, and sharper scoring tips.

### Benefits of Upgrading Your Strander from DKS to ISK

#### Scoring tips are integrated into the knife

- Improves knife life
- Simplifies knife changes
- Eliminates the need to stock scoring knives

#### Accurate scoring tip projections reduce fiber damage

- Reduces fines generation
- Ensures consistent strand quality
- Improves board properties

# Integrated Scoring Knives (ISK)

## Anatomy of an ISK System



## Comparison of Strander Knife Systems

	CONVENTIONAL PLATE KNIVES	DKS (DISPOSABLE KNIFE SYSTEM)	ISK (INTEGRATED SCORING KNIVES)
LIGHTWEIGHT	✗	✓	✓
SAFE HANDLING	✗	✓	✓
REVERSIBLE	✗	✓	✓
BUILT-IN COUNTERKNIFE	✗	✓	✓
BUILT-IN SCORING TIPS	✗	✗	✓
INCREASED KNIFE LIFE	✗	✓	✓
SIMPLIFIED KNIFE CHANGES	✗	✓	✓
SIMPLIFIED INVENTORY	✗	✓	✓
REDUCED FINES	✗	✓	✓
CONSISTENT STRAND QUALITY	✗	✓	✓
IMPROVED BOARD PROPERTIES	✗	✓	✓

Consult Kadant Carmanah Design for an in-depth breakdown of time, labor, and cost savings, in addition to how consistent strand quality contributes to improved board properties.