

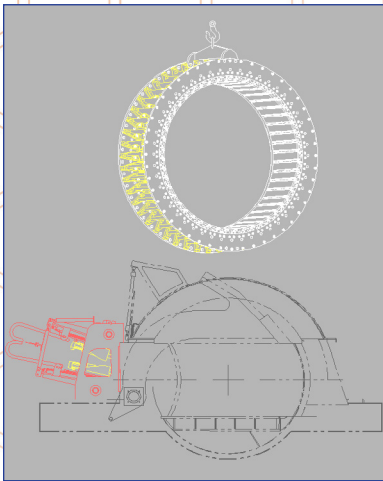
# SmartRING Retrofit

An Upgraded System for PZU Ring Flakers

---

## OPERATIONAL ADVANTAGES:

- Increased Wood Yield
- Lower Operating Costs
- Automated Knife Changes



---

## SMART RING UPGRADES DELIVER CONSISTENT STRAND QUALITY



The Kadant Carmanah SmartRING Retrofit consists of 4 main components:

KnifePAL System 1

Included in every SmartRING is an automated knife clamping and releasing management system. This facilitates the safe and efficient changing of the knife packages by automatically loosening and tightening the knife clamp bolts, while providing real-time operator feedback.

Ring Support Disc 2

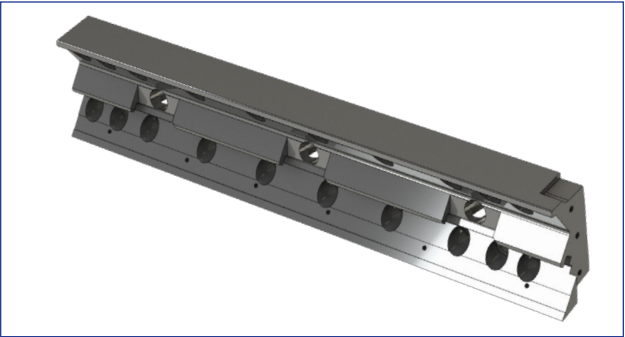
Required to mount the SmartRING on an existing PZU arbor.

SmartRING Innovation 3

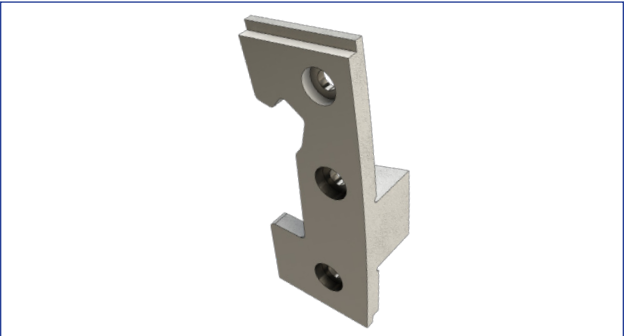
Engineered to match the physical dimensions of the existing PZU ring, the Kadant Carmanah SmartRING offers upgrades to your strand production's efficiency, consistency, and quality.

Combining long-lasting replaceable wear components, automated precision controls, and simplified operating and maintenance procedures, the SmartRING is a proven upgrade a PZU Ring Flaker.

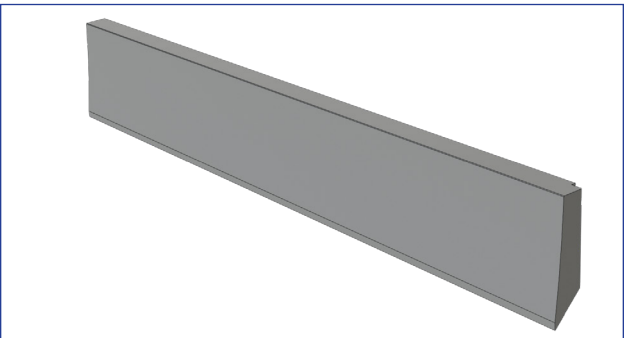
*The SmartRING is engineered for long-lasting, consistent operation with automated and simplified maintenance procedures.*



Replaceable knife carrier.



Replaceable wear shoe/plate.



Replaceable knife clamp.

4 Replace-and-Run Parts

The SmartRING supports Kadant Carmanah's innovative Disposable Knife System (DKS). With the knife, scoring knife holder, and counter knife all in one single component, it eliminates the time, labour, space, and risk of injury that are common when grinding and installing conventional plate knives.

# SmartRING Retrofit

## SMART RING UPGRADES DELIVER CONSISTENT STRAND QUALITY



*Simplified, easy-to-use controls help to reduce maintenance downtime procedures.*



*The Kadant Carmanah SmartRING is engineered to yield consistent, quality strands.*

### Operational Advantages

- Increased Wood Yield → Consistent Strands
- Lower Operating Costs → Replace-and-Run Wear Parts
- Automated Knife Changes → Real-Time Operator Feedback